

Due to the rising costs of manufacturing and material, we have decided to discontinue offering CPP products in the silver powdercoated finish.

A list of products being affected by this change is available through the link below, along with a current stock check should you decide to order our last inventory. This change will allow us to keep our prices affordable and we can pass on the savings to you. We are still offering these parts in our beautiful black powdercoated finish.

This change is effective immediately and includes, but is not limited to:

- *Control Arms, Upper and Lower (Stock and Totally Tubular)*
- *Rear Trailing Arms (Stock and Totally Tubular)*
- *Rear Shock Mount Crossmembers*
- *Transmission Crossmembers*
- *Drop Center Crossmembers*
- *Subframe Connectors*
- *Mini Subframe Kits*
- *Shock Tower Brace Kits*
- *Trac Bars*



7887TCA-UKS



5557TCA-U



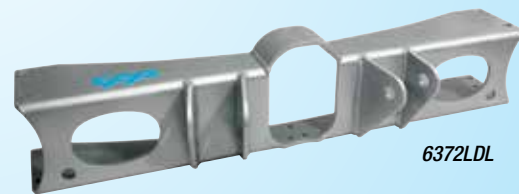
7887TCA-LKS



5557TCA-L



6466TCA-K



6372LDL



5864RTCA-ULK



CP90045



6062DTBK

*At this time, this change in production does not include brake calipers and components.*